

How Men Can Communicate Exceptionally Well With Women

An evidence-based field guide, with a working filter for whose advice to trust

Executive summary

The most important finding from the research is that men do not become world-class with women by memorizing stereotypes about female communication. They get there by combining three things: a realistic view of sex differences, a disciplined habit of perceived responsiveness - making the other person feel understood, valued, and cared for - and role-specific judgment about whether they are speaking with a daughter, wife, girlfriend, mother, or sister. Across psychology, men and women are more similar than popular culture suggests. Average differences exist, but overlap is high, and brains do not sort neatly into two communication types.^{1, 2, 3} Face-to-face language studies likewise find only a few robust average differences across contexts.⁴

The most useful average differences for men to know are narrower and more practical. Compared with men, women often score higher on measures of empathy and compassion, and many studies find an on-average female advantage on emotion-reading tasks such as the Reading the Mind in the Eyes test across countries. At the same time, some naturalistic studies find no female advantage on theory-of-mind performance once empathy and compassion are separated from mind-reading.^{9, 10} Women are also, on average, somewhat more likely to use affiliative or supportive turn-taking and some forms of tentative language, while men show somewhat more assertive speech. These are average tendencies, not rules about any individual woman.^{5, 6}

For men, the highest-yield habit is this sequence: slow down, reflect what she means, validate impact, ask what kind of support she wants, then collaborate only with consent. Research on intimacy, disclosure, and support shows that self-disclosure builds closeness most effectively when it is met with responsive understanding, and that support works best when it matches the other person's actual goal rather than the helper's preferred solution.^{11, 13}

In conflict, men do especially well when they avoid two common traps: harsh start-up and demand-withdraw. A harsh opening predicts poor conflict trajectories, and demand-withdraw patterns are associated with lower relationship and sexual satisfaction. Evidence-based couple therapy meaningfully improves relationship functioning and tends to hold gains over time, which means these skills are not just intuitive. They are trainable.^{14, 15, 18}

A final correction matters: women are not simply more emotional than men. Reviews find women somewhat more emotionally expressive on average, but recent work also finds little evidence that women's affective variability is inherently greater than men's. For men, the right takeaway is not women are emotional. It is that emotion is part of human communication, and dismissing it usually reduces accuracy.²

Common male mistake	Better evidence-based interpretation	What to do instead
Treating women as a fundamentally different species	Most sex differences in psychology are small or context-dependent; overlap is large. ¹	Start with curiosity about this woman, not a stereotype.
Hearing qualifiers such as maybe, kind of, or tag questions as weakness	Tentative language is somewhat more common among women in some contexts, but it can also do relational work such as softening a face threat. ⁶	Ask a clarifying question before judging confidence.
Jumping to solutions too fast	Matching support to need predicts partner sensitivity better than offering your favorite kind of help. ¹³	Ask: do you want listening, problem-solving, or help taking action?
Reading emotion as irrationality	Women are not inherently more emotionally volatile than men; expression and interpretation are shaped by context and norms. ²	Treat emotion as data about importance, safety, or impact.
Waiting until conflict is already on fire	Harsh start-up and demand-withdraw reliably worsen outcomes. ^{14, 15}	Open gently, own your piece, and repair early.

What the evidence actually says about women, men, and communication

The strongest broad conclusion is that sex differences in communication are real in some domains but routinely overstated. Hyde's gender similarities hypothesis and subsequent metasynthesis work both concluded that males and females are similar on most psychological variables, while the brain-mosaic work argues against the idea that human brains divide into a clean male-brain or female-brain binary.^{1, 2, 3} A scoping review of face-to-face dyadic speech reached a similarly sobering conclusion: few robust linguistic differences hold consistently across contexts, although women appear somewhat more engaged in supportive turn-taking.⁴

That said, several average tendencies can improve a man's calibration if he uses them humbly. In a meta-analysis, women were not globally more talkative than men, but women showed more affiliative speech and men somewhat more assertive speech.⁵ A separate meta-analysis found women more likely, on average, to use some forms of tentative language such as hedges and tag questions, though the pattern varied by context.⁶ And while older literature found women disclosed somewhat more overall, later work with young-adult dating couples found men and women both reported similarly high disclosure in close romantic relationships.^{7, 8}

On emotional communication, the best evidence is nuanced rather than ideological. Women scored higher than men on empathy and compassion in a naturalistic social task, yet the same study did not find female superiority in theory of mind.⁹ A very large international study of the Eyes test, by contrast, found an on-average female advantage across dozens of countries.¹⁰ The practical interpretation is that many women may notice interpersonal and nonverbal cues faster than many men do, but no man should assume that every woman is reading him accurately, or that every man is poor at it.

For men, the key implication is not become more feminine. It is become more perceptive, responsive, and less defensive. If women on average are somewhat more attuned to emotion, subtext, or relational process, then a man who learns to name feelings accurately, track tone, ask clarifying questions, and validate impact closes much of the gap.

Domain	Best-supported finding	Practical implication for men
Overall sex differences	Differences are smaller and less universal than stereotypes imply. ¹	Default to person-specific listening.
Talk style	Women are somewhat more affiliative; men somewhat more assertive; no simple women-talk-more rule. ⁵	If she is building connection while you are only exchanging data, adjust.
Tentative language	Women use some qualifiers more often in some settings; qualifiers can manage politeness, not just uncertainty. ⁶	Do not confuse softness of delivery with weakness of conviction.
Disclosure	Women disclosed somewhat more in older meta-analytic work, but men and women both disclose highly in close dating relationships. ^{7, 8}	Deep disclosure is not unmanly; it is relationship-building.
Empathy and emotion-reading	Women often score higher on empathy and compassion and some emotion-reading tasks, though not all mental-state tasks. ^{9, 10}	Practice reading tone and checking your interpretation explicitly.
Emotionality stereotype	Women are not simply more emotionally turbulent than men. ²	Never use too emotional as a shortcut for I do not understand this yet.

The communication model that works best

The single best research-backed framework for men is responsive communication. In the intimacy literature, closeness is built not only by disclosure but by how disclosure is received. When a woman tells you something important - fear, annoyance, disappointment, shame, desire, grief - your first job is to make her feel that you understood the point, the feeling, and why it matters.^{11, 12} In support research, the most effective help is optimal matching: emotional support after emotional disclosure, informational help after an information request, and the avoidance of criticism or sarcasm when someone is already vulnerable.¹³

For many men, the failure mode is not bad intention but premature fixing. If she says she had a rough conversation with her boss, and you immediately offer tactics, you may be solving the wrong problem. She may need acknowledgment, not analysis; solidarity, not strategy; or she may want both, but in sequence. Matching support is so central that an easy replacement habit is to ask one short question before helping.

“What would be most useful from me right now?”

In conflict, men also need a strong anti-defensiveness protocol. The University of Washington work associated the opening minutes of a conflict discussion with later marital stability, and demand-withdraw research shows that the more one partner pushes while the other retreats, the worse the relational outcomes.^{14, 15, 16} The correct move is not passivity. It is softened directness: state the issue without contempt, own your piece, and stay physically and verbally present.



The responsive-listening sequence. Reflect before you rebut, validate before you advise, ask before you act.

That flow is supported by the intimacy process model, perceived partner responsiveness research, and optimal-matching support research. It is also compatible with couple-therapy evidence showing that communication patterns can be improved rather than merely endured.^{11, 12, 13, 18}

A useful operating rule for men is this: reflect before you rebut; validate before you advise; ask before you act. That single discipline prevents many male-female communication problems that are actually speed, defensiveness, and mismatch problems.

Skill	What it sounds like	Why it works
Reflecting	You are not just upset about the comment - you felt dismissed in front of people.	Reflection signals understanding and raises perceived responsiveness. ¹²

Skill	What it sounds like	Why it works
Validating	I can see why that landed hard.	Validation reduces the need to escalate just to be understood. ¹¹
Support-matching	Do you want comfort, brainstorming, or backup?	Matching support predicts perceived sensitivity better than generic helping. ¹³
Soft start-up	Can we talk about something that bothered me last night?	Gentler openings reduce destructive conflict trajectories. ¹⁴
Anti-withdrawal	I need ten minutes to settle down, and I will come back.	Prevents stonewalling while preserving engagement; demand-withdraw is linked to poorer outcomes. ^{15, 16}
Follow-up	I have been thinking about what you said. How are you feeling about it now?	Responsiveness is judged over time, not in one line. ¹²

Role-specific field guide

Father and daughter

For fathers, the research points toward a combination of warmth, reliability, and autonomy support. Positive parent-adolescent communication is linked to lower depressive symptoms, and fathers' autonomy-supportive behavior during conflict predicts subsequent adolescent autonomy in real time. Work on father-adolescent closeness also ties father relationship quality to better adolescent outcomes, and daughters' own reports in emerging adulthood emphasize fathers' attitudes toward autonomy as central to relationship quality.^{19, 20}

In practice, this means a father should resist the impulse to protect by interrogating, overcorrecting, or moralizing. Daughters, especially teenagers and young adults, often experience repeated questioning, surveillance, or instant judgment as mistrust even when the father intends care. Public-health parenting guidance also stresses praise, support, respect for privacy, and a positive relationship over criticism and nagging.²¹

A helpful father line is: I care about your safety, and I also want to respect your judgment. Can we figure out what information would help me worry less without making you feel controlled? That sentence communicates concern without collapsing into control, which is exactly where many father-daughter talks go wrong.

Husband and wife

In marriage, the most predictive communication habits are not flashy. They are repair-oriented. Couple-conflict studies consistently identify harsh start-up, contempt, defensiveness, and demand-withdraw as destructive patterns, while responsiveness, accountability, and constructive engagement are protective. Couple therapy has large average effects on relationship functioning, which reinforces that these habits are skills, not personality destiny.^{14, 15, 18}

A husband who wants to communicate masterfully with his wife should learn to distinguish content from process. The content might be money, sex, parenting, chores, or in-laws. The process question is whether she feels heard, respected, and safe enough to stay open. Research on intimacy and partner responsiveness suggests that when wives perceive understanding, validation, and care, satisfaction improves; research on support-matching suggests that even a good solution can land badly if offered before attunement.^{11, 13}

A strong husband line is: I see the issue and I also see that how I handled it affected you. I want to understand both. That keeps accountability and curiosity on the table at the same time.

Boyfriend and partner

Early and nonmarital romantic relationships put even more pressure on calibration because the rules are still being negotiated. Research shows that self-disclosure and responsiveness are tied to satisfaction in dating couples, and responsiveness in initial acquaintanceships can increase interest and desire. In longer-term romantic relationships, partner responsiveness is also tied to sexual desire and sexual satisfaction.^{8, 29}

For boyfriends, the key is to signal interest without pressure. Many men confuse initiative with acceleration. The evidence suggests that responsiveness - understanding her pace, reading comfort accurately, and speaking explicitly about boundaries - supports both trust and desire better than ambiguity plus pressure. Sexual-consent research emphasizes communication, and public guidance stresses that consent is ongoing and can be withdrawn.^{31, 33}

In digital communication, tone matters more than many men assume. Experimental work found that emoji-containing text messages were perceived as more responsive than text-only messages, which then predicted greater closeness and relationship satisfaction.²⁸ That does not mean spam her with emojis. It means that in text, warmth cues are often useful because plain text strips away tone.

A strong boyfriend line is: I am interested in you, and I want this to move at a pace that feels good for both of us. What helps you feel comfortable and clear?

Son and mother

Mother and adult-child relationships are often close, emotionally loaded, and somewhat ambivalent. Research on parent and adult-child tensions shows that tensions are common and linked to both solidarity and ambivalence; parents and adult children often perceive tension differently, and parents tend to rate tensions, especially around lifestyle or behavior, as more intense. Related work on worry finds that parental concern can feel both loving and burdensome depending on amount and expression. Recent survey data also show that mothers are, on average, in more frequent contact with adult children than fathers.^{22, 23, 24, 27}

For sons, the master skill is boundary-setting without emotional exile. Many men oscillate between overcompliance and disappearance. A better pattern is warmth plus limits: answer the concern, appreciate the care, and define the boundary clearly. This is especially important when the recurring topics are dating, finances, housekeeping, or life choices, areas commonly reported in parent and adult-child tension research.²²

A strong son line is: I know this comes from love. I will tell you when I want advice; right now I mostly want you to know what is happening, not manage it for me. This preserves connection while de-escalating the mothering-of-an-adult dynamic that many men resent but fail to name cleanly.

Brother and sister

Sibling relationships remain important far into adulthood. Reviews of sibling relationship quality in adolescence and young adulthood repeatedly organize the literature around closeness, communication, and conflict, and perceived parental differential treatment is associated with poorer sibling relationship quality. Older adults generally report high sibling warmth and low conflict, but ambivalence and tension still matter for well-being.^{25,}

²⁶

For brothers speaking with sisters, the core competence is to stop confusing care with jurisdiction. Sisters often do not need a brother to referee their life, decode their motives for them, or become the family's unofficial prosecutor. Brother-sister communication improves when the brother treats the sister as a peer adult, does not minimize memories just because he remembers them differently, and avoids dragging parental favoritism, childhood roles, or caregiving inequities into the conversation without naming them directly.

A strong brother line is: I may remember this family situation differently, but I want to understand how it felt on your side before I defend my version. That one sentence counters one of the fastest ways brothers lose trust with sisters: arguing chronology before acknowledging impact.

Relationship	Main communication need	Highest-value moves	Common male error
Father - daughter	Safety and autonomy	Warmth, privacy respect, autonomy-supportive questions, praise before correction. ^{19, 21}	Interrogation, overcontrol, moralizing.
Husband - wife	Repair and responsiveness	Soft start-up, validation, ownership, anti-withdrawal, follow-up. ^{14, 18}	Defensiveness, contempt, stonewalling, fixing too fast.
Boyfriend - partner	Clarity, pacing, consent	Explicit boundary talk, warmth in text, responsive pacing. ^{28, 33}	Pressure, ambiguity, treating consent as one-time rather than ongoing.
Son - mother	Warm boundaries	Acknowledge care, limit advice, avoid disappearing. ^{22, 24}	Either fusing with her worry or going emotionally absent.
Brother - sister	Peer respect	Listen without hierarchy, name family-role baggage directly, avoid minimization. ²⁵	Talking down, dismissing impact, re-enacting childhood roles.

Scripts, exercises, and troubleshooting

The following scripts are illustrative, not canned lines to perform. Their value is structural: they show responsive listening, support-matching, softened directness, and explicit collaboration. Those elements are the parts backed by relationship science.

Annotated dialogue: husband and wife in conflict

Wife: When you shut down during dinner with my parents, I felt completely alone.

Husband: You felt alone, and my silence looked like I was not with you. *[reflection]*

Wife: Yes. It was not just silence. It felt like you checked out.

Husband: I can see why that hurt. I was overwhelmed, but I handled it badly. *[validation and ownership]*

Husband: Do you want me to just hear more of it right now, or think with you about what I should do next time? *[support-matching]*

Wife: Hear me first.

Husband: Okay. I am listening. *[staying present instead of defending]*

This script works because it puts meaning before rebuttal and support-matching before solution. That is consistent with perceived partner responsiveness and with evidence that early conflict process matters.^{12, 14}

Annotated dialogue: father and daughter on autonomy

Daughter: You ask where I am going like I am twelve.

Father: You are hearing my questions as distrust, not care. *[reflection]*

Daughter: Exactly.

Father: That matters. I do care about your safety, and I do not want to make you feel controlled. *[validation and values]*

Father: What amount of check-in would feel respectful to you while still giving me enough to not spiral? *[collaborative boundary-setting]*

Daughter: One text when I get there, not a whole interview.

Father: That sounds fair. Let us do that. *[specific agreement]*

This script lines up with autonomy-supportive fathering and positive parent-adolescent communication rather than control-driven monitoring.^{19, 20}

Annotated dialogue: son and mother on boundaries

Mother: I worry because you never tell me what is really going on.

Son: I know your worry comes from love. *[acknowledgment]*

Son: When I feel a lot of questions at once, I start to pull back. *[clean self-disclosure]*

Mother: I am only trying to help.

Son: I know. What helps me most is support without immediate advice. *[boundary]*

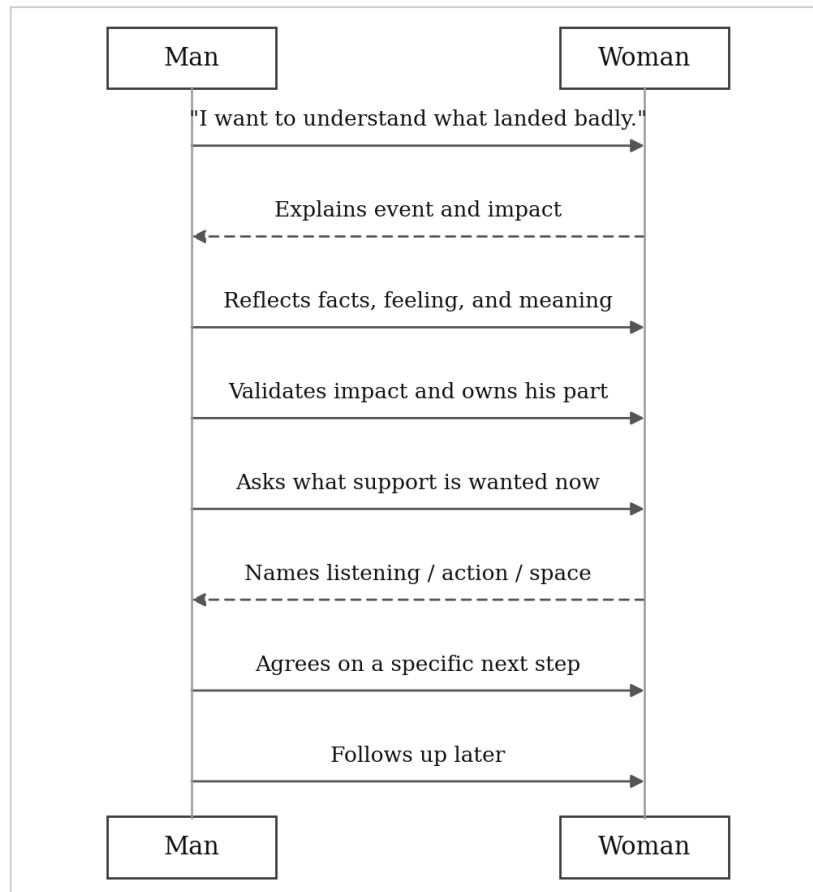
Son: If I want advice, I will ask for it. If I am calling to update you, can we keep it as listening first? *[role clarification]*

Mother: I can try.

Son: That would make it easier for me to stay in touch. *[connection preserved]*

This script works because it avoids shaming the mother's care while still redefining the adult-child boundary. That fits the tension and worry literature in parent and adult-child relationships.^{22, 24}

Repair sequence after a hard conversation



The repair exchange. The man carries most of the structure; she supplies the content and names the kind of support she wants.

That sequence mirrors the best-supported chain in the literature: disclosure, responsiveness, support-matching, and repair.¹¹

Practice drills for men

Exercise	How to do it	Why it helps
The ninety-second no-fix rule	For the first ninety seconds after she raises a concern, ask only clarifying or reflective questions.	Interrupts premature problem-solving and improves matching. ¹³
Facts, feelings, stakes drill	Reflect back one fact, one feeling, and one stake: this happened; you felt X; it mattered because Y.	Trains accuracy in emotional meaning, not just content. ¹²
Support-menu habit	Ask: listening, brainstorming, action, or space?	Converts helping from assumption to collaboration. ¹³
Soft-start rewrite	Rewrite one complaint as a gentle request: from you never to can we talk about.	Counters harsh start-up and lowers defensiveness. ¹⁴

Exercise	How to do it	Why it helps
Twenty-four-hour follow-up	Revisit a hard talk the next day with one check-in message or conversation.	Responsiveness is cumulative, and follow-up restores trust. ¹²
Digital tone check	In texting, add one warmth cue when appropriate: clear punctuation, appreciation, or an emoji that fits your normal style.	Text strips tone; warmth cues can increase perceived responsiveness. ²⁸

Troubleshooting questions men commonly ask

Problem	Best response
She says I am not listening, but I heard every word.	Hearing words is not the same as showing understanding. Reflect her meaning and emotional impact before defending yourself.
She says I do not know when I ask what she needs.	Offer options instead of forcing a blank answer: would comfort, help thinking, or a little space feel best?
She starts crying or gets angry and I freeze.	Slow yourself, lower your voice, and avoid labeling her as irrational. Ask what would help her feel safer or more understood right now.
Every conversation becomes the same argument.	You are probably in a recurring cycle, often a demand-withdraw pattern. Name the cycle, take a time-limited break if needed, and return at a promised time.
I apologized and she is still upset.	An apology without demonstrated understanding and behavioral change often feels incomplete. Add reflection, ownership, and a concrete next step.
Texting keeps causing weird misunderstandings.	Move important emotional topics to voice or in person when possible. In text, add tone markers intentionally and do not litigate complex feelings in clips.

The answers above are grounded in the same evidence base: responsiveness, matched support, conflict-process research, and digital-tone studies.

What not to do: choosing who to learn from

Everything above is trainable, and the evidence that it is trainable is strong. The market that sells these skills mostly is not. Before a man adopts any framework for talking to women, he should screen the source as carefully as he screens the advice. Most bad outcomes in this area do not come from bad intentions. They come from confident instruction delivered by people who have never been tested. This section is about who not to learn from. It is deliberately specific, because the failure mode is specific.

The honeymoon-stage expert

The most common unreliable source is the man who is roughly six months into a new relationship and has concluded that he understands women. He does not. He understands one woman, in the one phase of one relationship where almost any behavior is forgiven.

Early romantic love is a measurable neurochemical state. Functional imaging shows that early-stage intense romantic love activates dopamine-rich reward and motivation circuits, the same systems implicated in other powerful rewards.^{38, 39} The prefrontal regions associated with sober evaluation are relatively less active, which is part of why new love is idealizing and impulsive.⁴⁵ This is not an insult. It is biology, and it is temporary. A meta-analysis found that passionate, obsessive love tends to decline as relationship length increases, and longitudinal work on newlyweds documents honeymoon effects in which initially euphoric marriages cool, sometimes sharply, over the first years.^{40, 42} Intense romantic love can persist for decades.⁴¹ But that is the exception that survived the test, not the rule that arrives for free in month three.

So when a man in the honeymoon phase tells you what works with women, translate it accurately. He is reporting what works when both nervous systems are flooded with reward chemistry and neither party has hit a real structural test. His sample size is one. His data covers the easy season. He has run no reps in the part of the relationship that actually demands skill - the part where the chemistry has normalized and the work begins. Take his confidence as a symptom of the phase, not as evidence of competence.

The five-year problem

The second unreliable source is the man who built a relationship-coaching business on a track record shorter than five years. The arithmetic is simple. Passionate love declines over roughly the first one to three years.^{40, 42} Most couples do not encounter their first genuine structural stress test - a child, a financial crisis, a serious illness, a betrayal, a layoff, the slow grind of mismatched desire - until somewhere in that window or after it. A coach whose own track record is shorter than that window has, by definition, not observed durability. He cannot teach repair, because nothing of his has yet needed repairing. He is selling a map of a country he has only seen from the airport.

This matters more because of what the coaching industry is. In the United States, relationship and life coaching is essentially unregulated. There is no license requirement, no government-mandated training standard, and no official body that can revoke a credential for incompetence.^{43, 44} Anyone can build a website and call himself an expert tomorrow. Certifications exist, but they are voluntary and self-administered, and a certificate is not the same as a long, observed record of relationships that survived stress. The freedom of the field is real. So is the absence of a filter. The filter has to be you.

The Dunning-Kruger tax

There is a reason the least qualified voices are often the loudest. In their 1999 studies, Kruger and Dunning found that people who performed in the bottom quartile on tests of reasoning, grammar, and humor dramatically overestimated their own ability, in part because the same lack of skill that produced poor performance also robbed them of the ability to recognize it.³⁶ The work has been refined and contested since - part of the original effect is a statistical artifact, and the real picture is messier than the popular version - but the practical warning survives the debate.³⁷ Confidence is not evidence. The man most certain that he has women figured out is frequently the man with the least calibrated view of his own results.

Survivorship and the testimonial

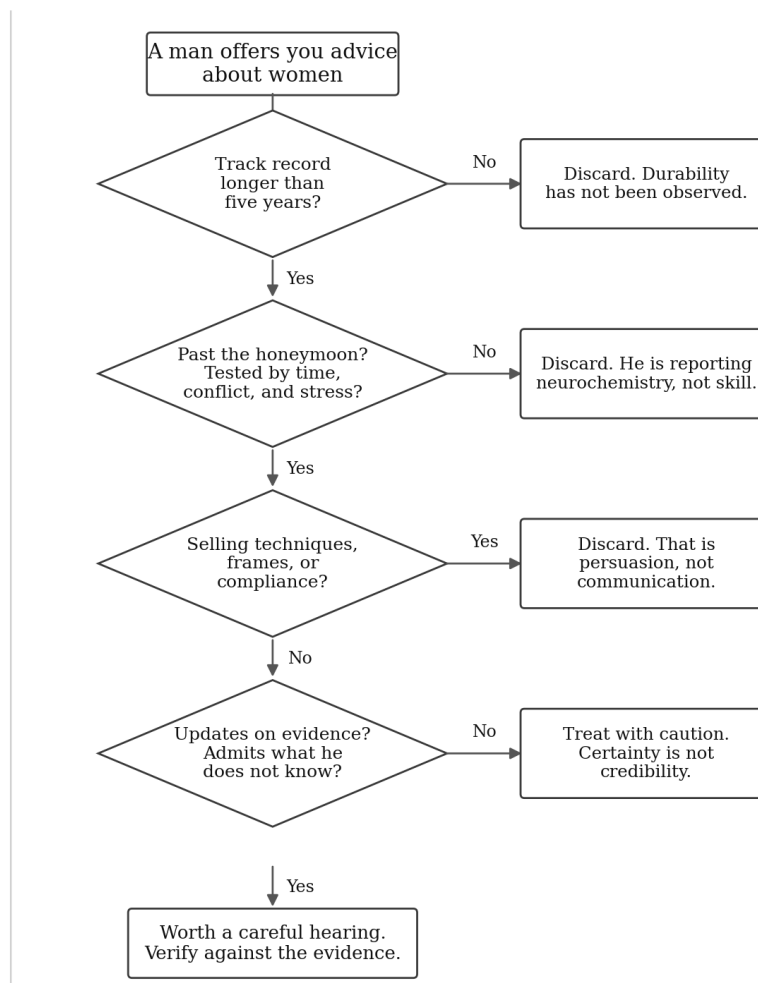
Advice sold to men comes wrapped in wins. You see the testimonials, the success story, the before and after. You do not see the relationships that ended, the clients who quietly churned, the advice that detonated. A wall of testimonials is a selected sample with the failures removed. It is not a control group, and it tells you almost nothing about the base rate. Treat any source that shows you only its victories as a source that is hiding its denominator.

The manipulation tell

The fastest way to disqualify a source is to listen for what it optimizes. The skills in this document optimize for understanding, respect, and clarity. A large amount of what is sold to men optimizes for control: techniques to make her chase, frames to win the interaction, scripts to engineer a specific response, tactics for compliance. The moment the goal is getting her to do something rather than understanding her accurately, you have left communication and entered persuasion. The ethical frame of this entire document is that mastery is not getting compliance.^{31, 33} Any source that teaches otherwise is teaching a different game, and usually a worse one.

What a credible source looks like

The contrast is not subtle. A credible source has a long, observed track record - relationships or clinical caseloads that have survived years and real stress, not a hot month. It points to evidence outside itself: longitudinal data, replicated studies, outcome research, not just its own story. It updates when the evidence changes and says plainly what it does not know. It optimizes for understanding rather than control. And it is comfortable with nuance, because the honest answer to most questions about people is that it depends, and here is on what. By that standard, this document is accountable too: it rests on peer-reviewed synthesis and longitudinal data, names its sources, and marks the places where the evidence is thin. The filter below is the operational version. Run any would-be teacher through it before you let his framework into your head.



A four-gate filter for relationship advice. Any single failed gate is reason enough to discard the source.

Signal	Red flag (discard or discount)	Green flag (worth weight)
Track record	Under five years, or only the current honeymoon.	Years of relationships or cases that survived real stress.
Source of authority	His own confidence and personal story.	Evidence outside himself, cited and checkable.
Relationship to evidence	Never updates, never wrong, never unsure.	Updates openly and names the limits.
What it optimizes	Compliance, frames, winning, getting her to act.	Understanding, respect, clarity, accurate reading.
Treatment of failure	Shows only wins and testimonials.	Discusses what did not work and why.
Default tone	Certainty about all women.	Curiosity about this woman.

Ethics, culture, limitations, and prioritized sources

Mastery in communication with women should be defined ethically: not persuasion, not manipulation, not getting compliance, but reliably creating understanding, respect, and clarity. In romantic and sexual contexts, this includes explicit consent and boundary-checking. Peer-reviewed work on sexual-consent communication frames effective consent talk as a violence-prevention strategy, and public guidance is clear that consent is ongoing and based on clear communication, mutual respect, and continuing agreement.^{31, 33}

Communication skill is also not the right tool for abuse. If a relationship involves coercion, stalking, sexual pressure, threats, intimidation, or violence, the issue is safety and abuse, not better phrasing. The Centers for Disease Control and Prevention defines intimate partner violence broadly enough to include physical violence, sexual violence, stalking, and psychological aggression; the Office on Women's Health likewise includes verbal and emotional abuse and coercion. Men can also be victims of intimate partner violence, sexual violence, and stalking, and official resources for survivors are available.^{34, 35}

Cultural and individual variability are not side notes. They are central. Parent-adolescent communication has shown important links to psychological adjustment across cultural groups in many countries, while work on parent-child affectionate communication indicates that verbal, nonverbal, and supportive expressions differ across countries. So men should not assume that one ideal emotional style is universally feminine or universally effective.³²

The limitations of the evidence matter. Much of the role-specific literature is stronger for heterosexual romantic couples and for parents of adolescents than it is for adult sons with mothers or adult brothers with sisters. Some classic sex-difference studies rely on binary categories and older Western samples. And even strong effects in the aggregate do not justify stereotyping a particular woman in front of you. The safest inference is this: use averages to generate questions, never to replace observation.

Evidence strength

Topic	Evidence strength	Why
Perceived partner responsiveness, disclosure, and intimacy	High	Multiple foundational and replicated studies support it across close relationships. ^{11, 12}
Support-matching	High	Direct observational evidence in couples supports matching help to need. ¹³
Destructive couple patterns such as harsh start-up and demand-withdraw	High	Long-running conflict research and therapy-outcome data are convergent. ^{14, 15, 18}
Average sex differences in empathy, compassion, and supportive turn-taking	Moderate	Repeated findings exist, but effects vary by task, context, and measure. ^{9, 10}
Father - daughter autonomy-support effects	Moderate	Good family-process evidence exists, but daughter-specific communication research is thinner than couple research. ^{19, 20}
Son - mother and brother - sister role-specific prescriptions	Limited to moderate	Strong general family literature exists, but highly specific dyad prescriptions are less developed. ^{22, 25}
The decline of passionate love over time	High	Imaging, meta-analytic, and longitudinal newlywed studies converge. ^{40, 41, 42}
Neuroscience claims about male versus female communication brains	Limited for practical use	Some average neural differences exist, but mosaic-brain evidence argues against simplistic binary applications. ³

Prioritized sources

Source	Type	Why it matters
Hyde, gender similarities hypothesis; Zell et al., metasynthesis	Peer-reviewed syntheses	Best broad corrective against exaggerated sex stereotypes. ^{1, 2}
Joel et al., the human brain mosaic	Primary neuroscience	Best check against simplistic male-brain or female-brain claims. ³
Laurenceau et al.; Reis et al.	Foundational intimacy work	Core evidence for why reflective, validating listening creates closeness. ^{11, 12}
Cutrona et al., optimal matching	Primary couple-support study	Best evidence for asking what kind of help is wanted. ¹³
Roddy et al., couple-therapy meta-analysis	Meta-analysis	Shows relationship patterns are treatable and improvable. ¹⁸
Carrere and Gottman; Christensen and Heavey	Conflict-pattern studies	Best evidence on harsh start-up and demand-withdraw. ^{14, 15}
Leaper and Ayres; Leaper and Robnett	Language meta-analyses	Best evidence on affiliative speech, assertiveness, and tentative language. ^{5, 6}

Source	Type	Why it matters
Kruger and Dunning, unskilled and unaware	Primary cognition study	Why the most confident relationship voice is often the least calibrated. ³⁶
Fisher et al.; Graham; Acevedo et al.	Imaging and meta-analysis	Why honeymoon-stage confidence is not durable competence. ^{38, 40, 41}
CDC; Office on Women's Health; RAINN	Official guidance	Best support for abuse definitions and ethical, consent-based communication. ^{33, 34, 35}

Open questions and limitations

The best evidence is strongest for distressed or committed couples and for parent-adolescent communication, and weaker for adult brother-sister and adult son-mother communication in ordinary, nonclinical settings. Much of the literature also remains organized around binary sex categories and often around heterosexual samples, which limits how precisely findings can be generalized. Digital communication norms are changing quickly, and recent findings on emojis and perceived responsiveness are promising but newer and narrower than the classic intimacy and conflict literatures. The credibility filter in this document is a reasoning tool, not a measured construct; it encodes the same evidentiary logic the rest of the report relies on, applied to the question of whom to trust.

The most defensible bottom line is this: men become outstanding communicators with women not by decoding an alien codebook, but by getting unusually good at responsiveness, emotional accuracy, support-matching, softened directness, and respectful boundaries - and by refusing to take instruction from anyone who has not been tested. The science supports that approach across romance, parenting, and family life far more strongly than it supports any crude formula about what women are like.

A personal note: how I do this

Everything above is the evidence. This is the practice.

The most important relationships in my life are not a case study. They are my kids' mom. My three daughters. My girlfriend of more than ten years. My daughter's mother-in-law, her grandmother-in-law, and her sister-in-law. My girlfriend's sister. My best friend's wife. My best friends. My clients. The people I would stand in front of a truck for.

Across all of them I run a short list. Seven things. I did not invent most of them. I borrowed them from people who were further down the road than I was, and then I tested them for years against real relationships under real stress. They have never let me down. They have only ever shown me where I was not living up to them. Here they are.

“They are people first. Everything else is just how I prove it.”

1. They are people first

Before anyone is a daughter or a partner or a client, she is a person. The state I want to hold toward her is unconditional love, and I do not get to redefine that word to whatever is convenient for me that day. The definition is older than I am. Love is patient. Love is kind. It does not envy, it does not boast, it is not proud. It is not rude, it is not self-seeking, it is not easily angered, it keeps no record of wrongs. It does not delight in evil but rejoices with the truth. It always protects, always trusts, always hopes, always perseveres. That is the standard. I

miss it constantly. I keep aiming at it anyway.

2. Be present

I learned this from the monks at Oneness. Anandagiri and Yuktesh. Presence is not a technique you run on someone. It is a state you bring. When I am with my girlfriend, I am with my girlfriend. When I am with a client, I am with the client. Not half there with one eye on the phone. All the way there. People can feel the difference, and they remember it a lot longer than anything clever I say.

3. Quick to listen, slow to speak, slow to anger

Another verse. I learned it from Jay Morrison. Quick to listen, slow to speak, slow to anger. Read it in that order, because the order is the whole point. Most of the damage I have done in my life came from running it backward - fast to speak, fast to anger, slow to listen. When I get the order right, almost nothing goes wrong. When I get it wrong, almost everything does.

4. Know what is most important to them, and how they know when they have it

This is the part most people skip. It is not enough to know that she values feeling respected, or safe, or chosen. I need to know how she knows. What actually has to happen for her to feel it. Two people can both say they want to feel loved and need completely different evidence that they are. If I do not know her evidence, I am guessing. And I will guess wrong in exactly the way that costs the most.

5. Plan ahead for my responses, no matter the situation

There is nothing new under the sun. There are only so many things a relationship can put in front of me. The hard moment. The criticism. The bad news. The silence. The test. I do not have to be caught flat every time it happens. I can decide in advance who I want to be when each one shows up, so that in the moment I am not improvising my character on the spot. The response is already chosen. I just have to deliver it.

6. Be relentlessly truthful in love, and know when to speak it

Truth without love is cruelty. Love without truth is cowardice. I want both, every time. But timing is its own skill. The truth has to land in fertile ground or it does not take root - it just makes a mess and gets trampled. So I stay relentless about the truth and patient about the ground. I tell it, and I watch for the moment she can actually receive it. Relentless about the what. Patient about the when.

7. Be the best man I can be for them

That is the whole thing underneath all of it. Not the best man in the room. Not the best man on paper. The best man I am actually capable of being, for these specific people, today. Every other principle on this list is just a tool in service of that one. If I am being that man, the rest takes care of itself. If I am not, no technique is going to save me.

That is the list. Seven. I have run it for years now, across every relationship that matters to me, and the only thing it has ever failed to do is let me off the hook.

Resources

Three places to take this further. The first is a tool built directly on the research in this document. The second is its home on the web. The third is a long-running program from a source that clears the durability test described earlier. The cover and the program image below are clickable as well.



What Women Want - Communication Mastery

[Try the What Women Want GPT](#)

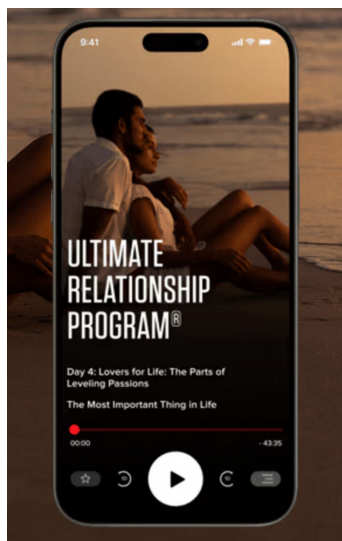
A conversational version of this guide. Use it to rehearse a hard conversation, pressure-test a message before you send it, or walk a specific relationship through the responsive-listening sequence.

[Visit WhatWomenWant.vip](#)

The home for the guide and the GPT.

[Tony Robbins, Ultimate Relationship Program](#)

A structured program on building lasting passion and connection. Robbins has worked in this field for more than four decades, which puts him well past the five-year durability test set out earlier in this document.



Tony Robbins, Ultimate Relationship Program

References

1. Hyde, J. S. (2005). The gender similarities hypothesis. *American Psychologist*, 60(6), 581-592. pubmed.ncbi.nlm.nih.gov/16173891
2. Zell, E., Krizan, Z., and Teeter, S. R. (2015). Evaluating gender similarities and differences using metasynthesis. *American Psychologist*, 70(1), 10-20.
3. Joel, D., et al. (2015). Sex beyond the genitalia: the human brain mosaic. *PNAS*, 112(50), 15468-15473. pnas.org/doi/10.1073/pnas.1509654112
4. Plug, I., et al. Scoping review of gender differences in face-to-face dyadic speech. (Review.)
5. Leaper, C., and Ayres, M. M. (2007). A meta-analytic review of gender variations in adults' language use. *Personality and Social Psychology Review*, 11(4), 328-363. pubmed.ncbi.nlm.nih.gov/18179347
6. Leaper, C., and Robnett, R. D. (2011). Women are more likely than men to use tentative language. *Psychology of Women Quarterly*, 35(1), 129-142. [sagepub, doi 10.1177/0361684310392728](https://doi.org/10.1177/0361684310392728)
7. Dindia, K., and Allen, M. (1992). Sex differences in self-disclosure: a meta-analysis. *Psychological Bulletin*, 112(1), 106-124. pubmed.ncbi.nlm.nih.gov/1388280
8. Self-disclosure and responsiveness in young-adult dating couples. *Frontiers in Psychology* (2021). frontiersin.org, doi 10.3389/fpsyg.2021.647596
9. McDonald, B., et al. Naturalistic study of empathy, compassion, and theory of mind. pmc.ncbi.nlm.nih.gov/articles/PMC4469291
10. Greenberg, D. M., et al. (2023). Sex differences in Reading the Mind in the Eyes across countries. *Scientific Reports*, 13. nature.com/articles/s41598-023-47747-9
11. Laurenceau, J.-P., Barrett, L. F., and Pietromonaco, P. R. (1998). Intimacy as an interpersonal process. *Journal of Personality and Social Psychology*, 74(5), 1238-1251. pubmed.ncbi.nlm.nih.gov/9599440
12. Reis, H. T., Lee, K. Y., O'Keefe, S. D., and Clark, M. S. (2018). Perceived partner responsiveness. clarkrelationshiplab.yale.edu
13. Cutrona, C. E., et al. Optimal matching model of social support: observational study of couples. pubmed.ncbi.nlm.nih.gov/18453467
14. Carrere, S., and Gottman, J. M. (1999). Predicting divorce among newlyweds from the first three minutes of a marital conflict discussion. University of Washington. washington.edu/news/1999/09/27
15. Christensen, A., and Heavey, C. L. Gender, power, and the demand-withdraw pattern in marital conflict. (Primary study.)
16. Holley, S. R., et al. Demand-withdraw communication and relationship satisfaction. (Primary study.)
17. Rosen, N. O., et al. Demand-withdraw communication and sexual satisfaction. (Primary study.)
18. Roddy, M. K., et al. Meta-analysis of couple-therapy outcomes. (Meta-analysis.)
19. Dynamics of mother-adolescent and father-adolescent autonomy and control. University of Illinois. experts.illinois.edu
20. Daughters' reports of fathers' autonomy attitudes in emerging adulthood. Illinois State University. ir.library.illinoisstate.edu/fpsa/1
21. National Institutes of Health (2019). Parenting Teens. *NIH News in Health*. newsinhealth.nih.gov/2019/06/parenting-teens
22. Tensions in parent and adult-child relationships. pmc.ncbi.nlm.nih.gov/articles/PMC10195043
23. Perceptions of tension in parent and adult-child relationships. *ScienceDaily* (2009). sciencedaily.com/releases/2009/05/090505153624.htm
24. The experience of worry in parent and adult-child relationships. researchgate.net/publication/229632003
25. Sibling relationship quality in adolescence and young adulthood (review). [sagepub](https://sagepub.com), doi 10.1177/02654075221104188
26. Sibling warmth and conflict across the life span. pmc.ncbi.nlm.nih.gov/articles/PMC4018724
27. Pew Research Center. Contact between parents and adult children. (Survey data.)
28. Emoji use and perceived responsiveness in text messaging (2025). [sagepub](https://sagepub.com), doi 10.1177/02654075251332725
29. Responsiveness, interest, and desire in early acquaintance. pubmed.ncbi.nlm.nih.gov/2213491
30. Family relationship quality. *PLOS ONE*. doi 10.1371/journal.pone.0326189
31. Sexual-consent communication as a violence-prevention strategy. pubmed.ncbi.nlm.nih.gov/32166654
32. Parent-child affectionate communication across cultures. pubmed.ncbi.nlm.nih.gov/32551734
33. RAINN. Consent 101: respect, boundaries, and building trust. rainn.org
34. Centers for Disease Control and Prevention. About intimate partner violence. cdc.gov/intimate-partner-violence/about
35. U.S. Office on Women's Health. Abuse and your health. (Public-health guidance.)

36. Kruger, J., and Dunning, D. (1999). Unskilled and unaware of it. *Journal of Personality and Social Psychology*, 77(6), 1121-1134. doi 10.1037/0022-3514.77.6.1121
37. The Dunning-Kruger effect is not what you think it is. *Scientific American* (2024); see also Nuhfer et al. on statistical artifacts. [scientificamerican.com](https://www.scientificamerican.com)
38. Aron, A., Fisher, H., et al. (2005). Reward, motivation, and emotion systems associated with early-stage intense romantic love. *Journal of Neurophysiology*, 94(1), 327-337.
39. Harvard Medical School. Love and the brain (Schwartz and Olds). hms.harvard.edu/news-events/publications-archive/brain/love-brain
40. Graham, J. M. (2011). Measuring love in romantic relationships: a meta-analysis. *Journal of Social and Personal Relationships*, 28(6), 748-771.
41. Acevedo, B. P., Aron, A., Fisher, H. E., and Brown, L. L. (2012). Neural correlates of long-term intense romantic love. *Social Cognitive and Affective Neuroscience*, 7(2), 145-159.
42. After the honeymoon: neural and genetic correlates of romantic love in newlywed marriages. ncbi.nlm.nih.gov/pmc/articles/PMC7223160
43. ProPublica (2024). When therapists lose their licenses, some turn to the unregulated life-coaching industry. [propublica.org](https://www.propublica.org)
44. International Coaching Federation. Global Coaching Study: industry size and voluntary credentialing.
45. Pacific Neuroscience Institute. The neuroscience of love and connection. [pacificneuroscienceinstitute.org](https://www.pacificneuroscienceinstitute.org)